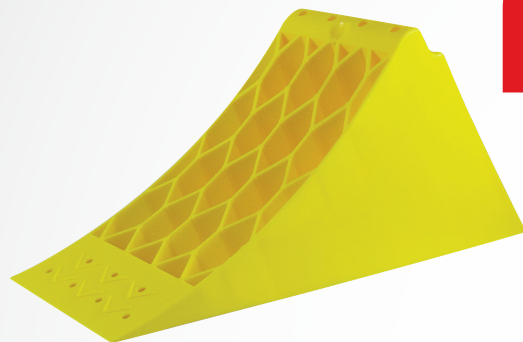
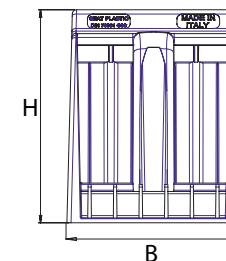
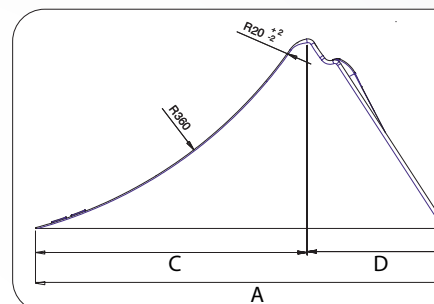
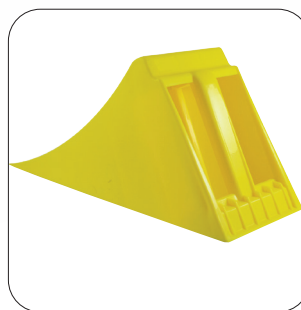


# CUNEO PICCOLO PLASTIC CHOCK R360



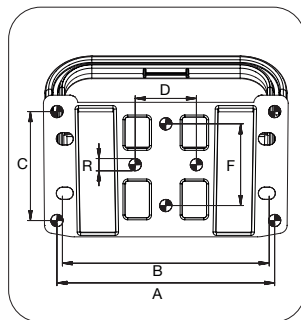
**NEW**

Omologato/Homologation **DIN 76051 - G36**



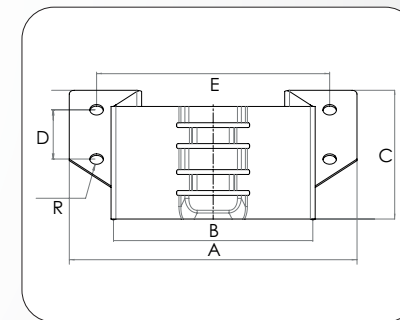
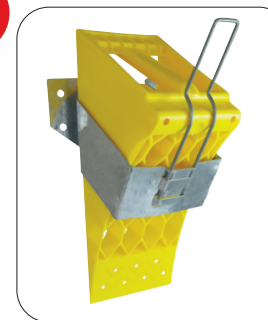
ART./REF.	DESCRIZIONE/DESCRIPTION	A mm	B mm	C mm	D mm	H mm	R mm
<b>MP02891</b>	Cuneo fermaruota in plastica raggio 360 <i>Plastic chock 360</i>	328	124	225	103	151	360

**NEW**



ART./REF.	DESCRIZIONE/DESCRIPTION	A mm	B mm	C mm	D mm	E mm	F mm	R mm
<b>MP02888</b>	Porta cuneo R360 con maniglia <i>Plastic chock holder R360</i>	163	155	81,5	46	41	61	9

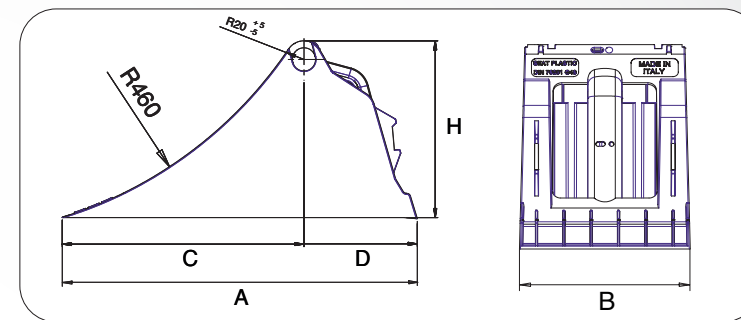
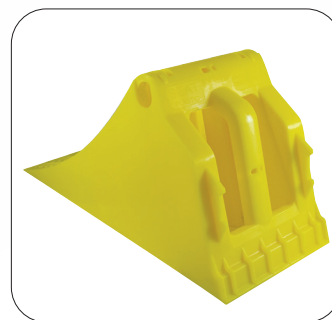
**NEW**



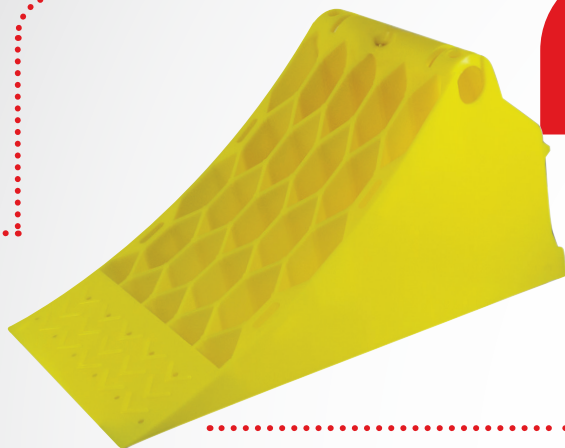
ART./REF.	DESCRIZIONE/DESCRIPTION	A mm	B mm	C mm	D mm	E mm	R mm
<b>OMP0360</b>	Porta cuneo R360 in metallo <i>Galvanized chock holder R360</i>	179	124	80	40	145	4,25

# CUNEO GRANDE PLASTIC CHOCK R460

Omologato/Homologation DIN 76051 - G36

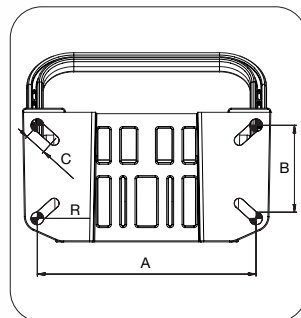


**NEW**

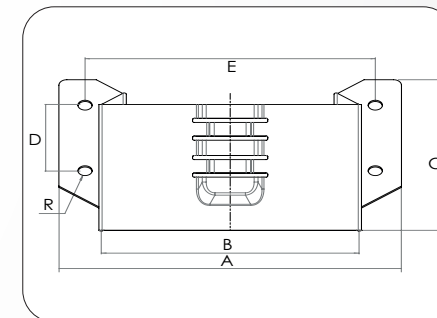
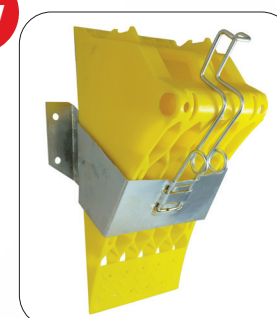


ART./REF.	DESCRIZIONE/DESCRIPTION	A mm	B mm	C mm	D mm	H mm	R mm
<b>MP02890</b>	Cuneo fermaruota in plastica raggio 460 <i>Plastic chock 460</i>	385	161	265	120	192	460

**NEW**



**NEW**



ART./REF.	DESCRIZIONE/DESCRIPTION	A mm	B mm	C mm	R mm
<b>MP02889</b>	Porta cuneo R460 con maniglia <i>Plastic chock holder R460</i>	214	85	22	6,25

ART./REF.	DESCRIZIONE/DESCRIPTION	A mm	B mm	C mm	D mm	E mm	R mm
<b>OMP0460</b>	Porta cuneo R460 in metallo <i>Galvanized chock holder R460</i>	216	163	110	60	183	4,50